

KD系列单泵 KD series single pump

产品外观及简介 Surface/Brief introduction

KDG0系列 规格 10...16

KDG0 Series displacement 10...16

KDG1系列 规格 25...63

KDG1 Series displacement 25...63

KDG2系列 规格 63...125

KDG2 Series displacement 63...125



特点 Characteristic

采用轴向和径向压力补偿设计，即使在低转速和低粘度下仍保持较高的容积效率。

With special design of pressure compensate, it is High Volumetric efficiency even when low rotation speed and low viscosity.

超低的噪音，采用高强度铸铁和内部独特的消音设计，使噪音更低。

The noise is very low. Adopt high-strength iron casting and special noise-deduction design inside, the noise of pump is much lower.

极低的流量和压力脉动，在低速状况仍可保持稳定的流量和压力输出。

Very low flow and pressure fluctuation. It can keep stable flow and pressure even it is low speed.

高压设计，最高使用压力可达到25-35Mpa。

It is high-pressure design. The highest pressure is 25-35Mpa.

转速范围宽广，最高转速可达2500-3000r/min。

Rotation speed range is large. The highest rotation speed is 2500-3000r/min.

可进行组合形成双联泵。

It can be assembled to double pump.

对油液污染不敏感，使用寿命长。

It is not sensitive to greasy dirt so that the lifetime is much longer.

可广泛适用于工业，如塑机、鞋机、压铸机械以及叉车等行业的液压系统。尤其适用于伺服变频驱动的节能系统。

It is widely applied in industry, such as hydraulic system in plastic moulding machine, shoes machine, casting machine and forklift...

Especially in system that servo variable-frequency drives.

型号说明 Model Designation

	KD	1	-40	-01	R	-V	P	C
--	----	---	-----	-----	---	----	---	---

泵类型 Pump Type	
内啮合齿轮泵 Internal gear pump	KD
系列号 Series No	
排量 10...16 Displacement	0
排量 25...60 Displacement	1
排量 80...125 Displacement	2
规格 Spec	
排量 Displacement (mL/r)	
10	13
125	16
	25
	32
	40
	50
	63
	80
	100
设计号 Designing No.	
	01
旋转方向 (从轴端看) Direction of rotation (from shaft end of pump)	
顺时针 Clockwise rotation	R
逆时针 Antic lockwise rotation	L
密封形式 Sealing	
氟橡胶 Viton	V
轴伸形式 Shaft type	
平键轴 Straight key shaft	P
花键轴 Spline shaft	S
法兰安装形式 Installation	
SAE 2孔 SAE 2Hole	C

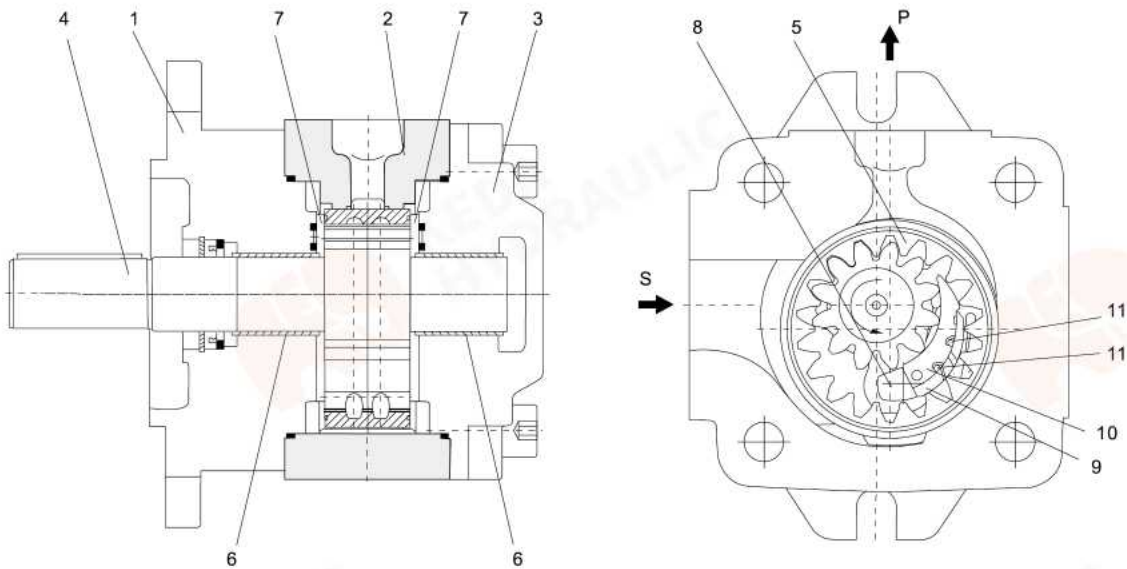
机能、剖面 Function and section

KD 系列液压泵为具有固定排量的间隙补偿的内啮合齿轮泵。

KD series is an internal gear pump with backlash compensation and fixed displacement.

其基本构成是：前盖（1），泵体（2），后盖（3），齿轮轴（4），内齿圈（5），滑动轴承（6），前后侧板（7）和定位杆（8），以及由月牙副板（9），月牙主板（10）和塑料棒（11）组成的径向补偿功能。

Main Spare part: front cover (1) pump body (2) Rear cover(3), Gear shaft(4), Internal gear(5), ball bearing(6), Side plate(7), Locating Rod(8), and radial compensation by Filler segment carrier(9), Filler sealing segment(10) and plastic bar(11).



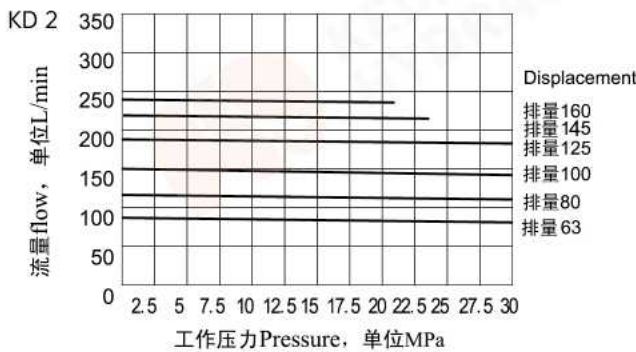
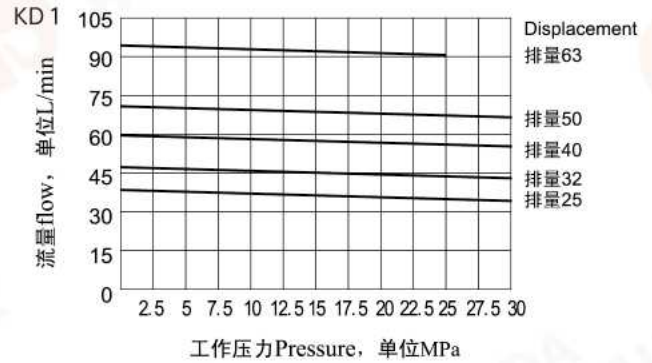
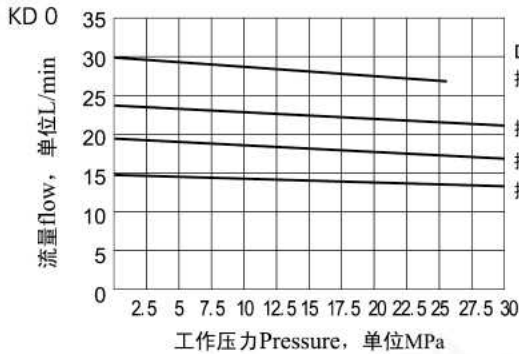
性能参数 Performance parameter

系列号 Series No	规格 Spec	排量 mL/r Displacement	工作压力MPa Pressure		转速范围 r/min Rotation Speed		重量KG Weight	● 可以供货 Available ○ 正在准备 In development
			额定Rated	最高Max	最高Max	最低Min		
KD 0	10	10.2	31.5	35	3000	600	4.8	●
	13	13.3	31.5	35	3000	600	4.9	●
	16	16.0	31.5	35	3000	600	5.2	●
	20	20.0	25	30	3000	600	5.6	○
KD 1	25	25.3	31.5	35	3000	200	14.5	●
	32	32.7	31.5	35	3000	200	15	●
	40	40.1	31.5	35	3000	200	16	●
	50	50.7	31.5	35	3000	200	17	●
	63	63.7	25	30	3000	200	18.5	●
KD 2	63	64.7	31.5	35	3000	200	42	○
	80	81.4	31.5	35	3000	200	43.5	●
	100	100.2	31.5	35	3000	200	45.5	●
	125	125.3	31.5	35	3000	200	48	●
	145	145.2	25	28	3000	200	50	○
	160	162.8	21	26	3000	200	52	○

特性曲线 Characteristic curve

流量压力特性: (测试条件: $n=1450r/min, v=46mm^2/s, t=50^\circ C$)

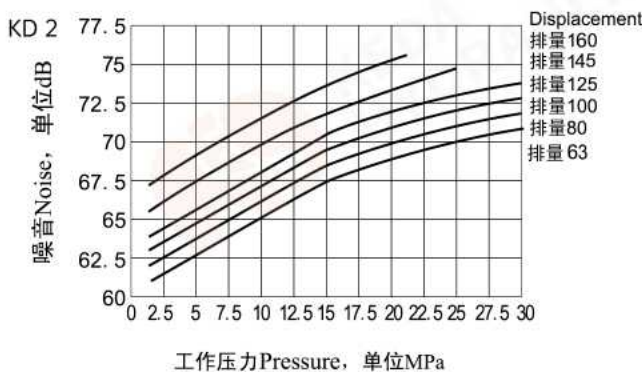
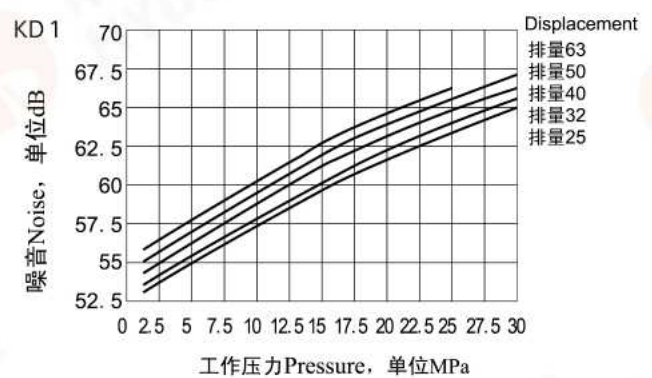
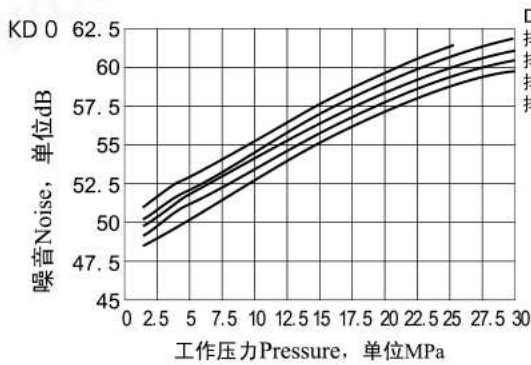
Flow Pressure Performance: (testing conditions: $n=1450r/min, v=46mm^2/s, t=50^\circ C$)



噪音曲线 Noise Characteristic

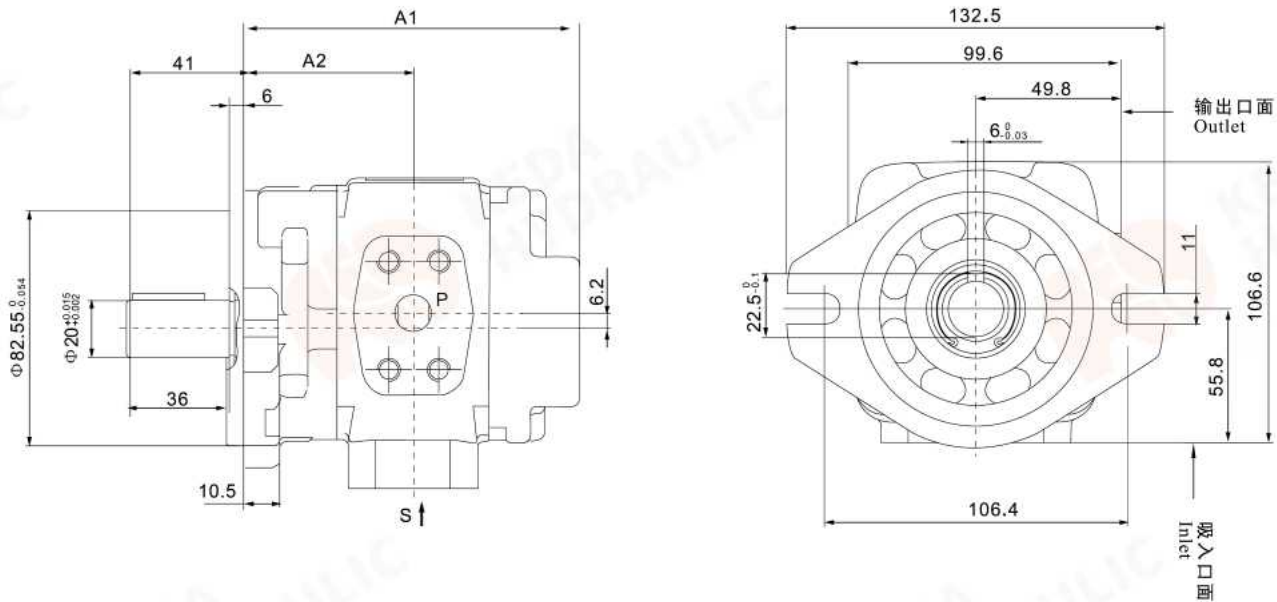
(测试条件: $n=1450r/min, v=46mm^2/s, t=50^\circ C$ 传感器与泵距离=1m)

test conditions: $n=1450r/min, v=46mm^2/s, t=50^\circ C$ the distance between transducer and pump=1m



安装连接尺寸 Installation dimension

KD 0-※-01R-VPC (P型平键轴) P Type Straight Key shaft



泵型号 Model No.	A1	A2	S	P
KD 0-10-01R-VPC	111	56	$\Phi 19$	$\Phi 13$
KD 0-13-01R-VPC	117.5	59.25		
KD 0-16-01R-VPC	123	62		
KD 0-20-01R-VPC	131	66	$\Phi 26$	$\Phi 18$

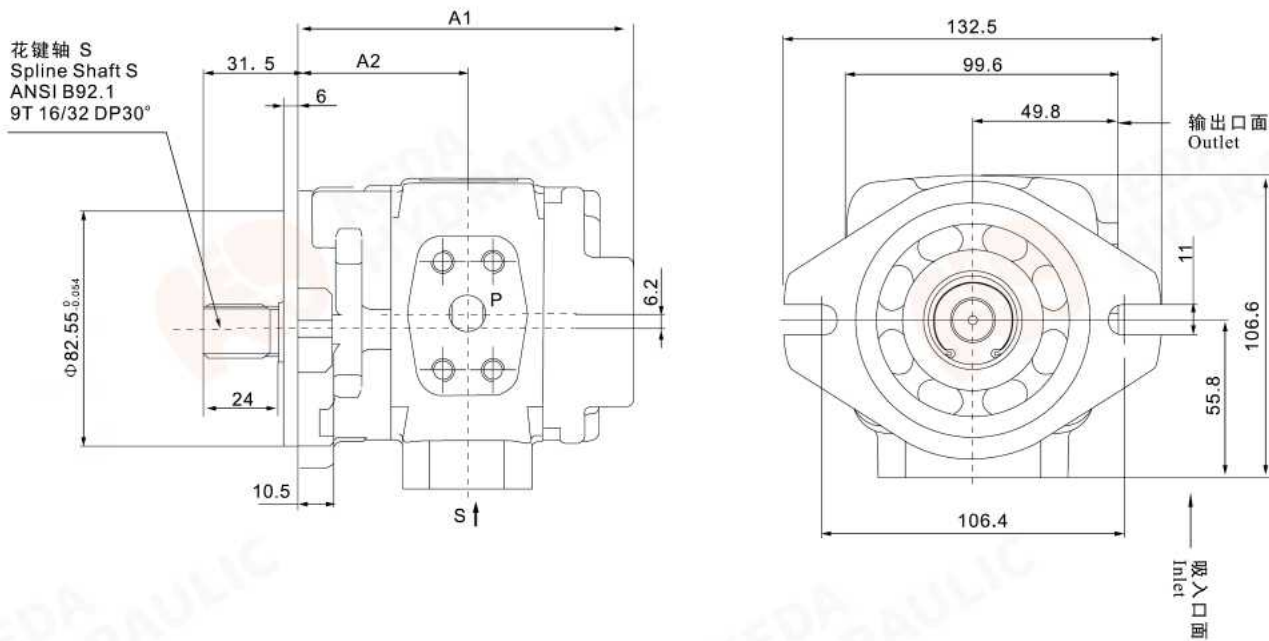
油口法兰连接尺寸见第061页。

For flange installation dimension, refer to page 061.

安装连接尺寸 Installation demension

KD 0-※-01R-VSC (S型花键轴)

S Type Spline shaft



泵型号 Model No.	A1	A2	S	P
KD 0-10-01R-VSC	111	56	Φ 19	Φ 13
KD 0-13-01R-VSC	117.5	59.25		
KD 0-16-01R-VSC	123	62		
KD 0-20-01R-VSC	131	66	Φ 26	Φ 18

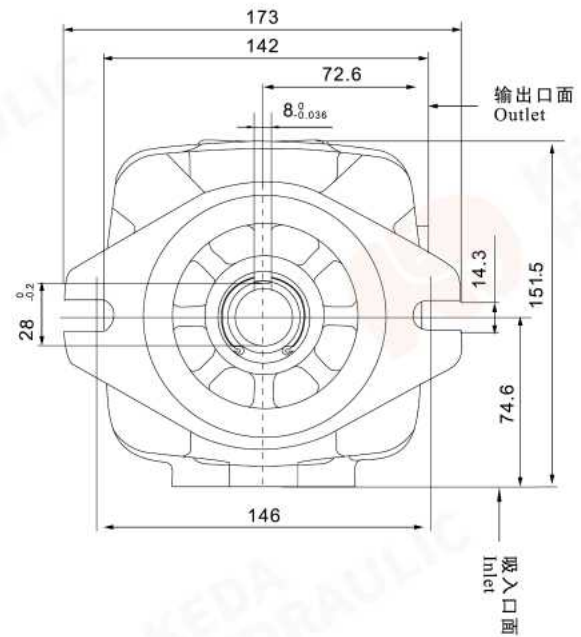
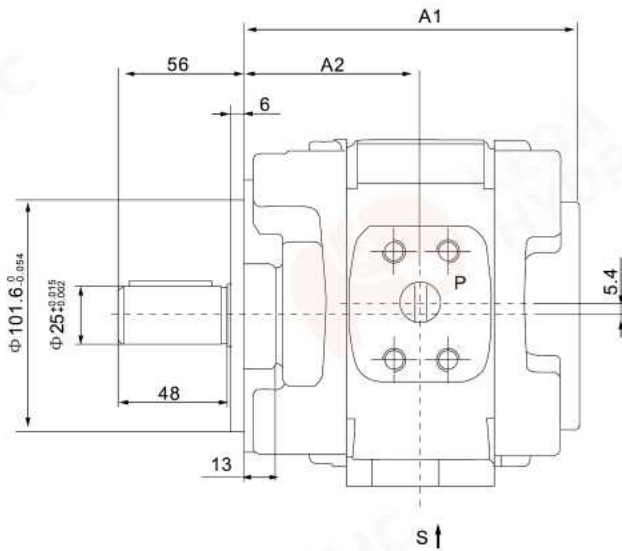
油口法兰连接尺寸见第061页。

For flange installation demension, refer to page 061.

安装连接尺寸 Installation dimension

KD 1-※-01R-VPC (P型平键轴)

P type straight key shaft



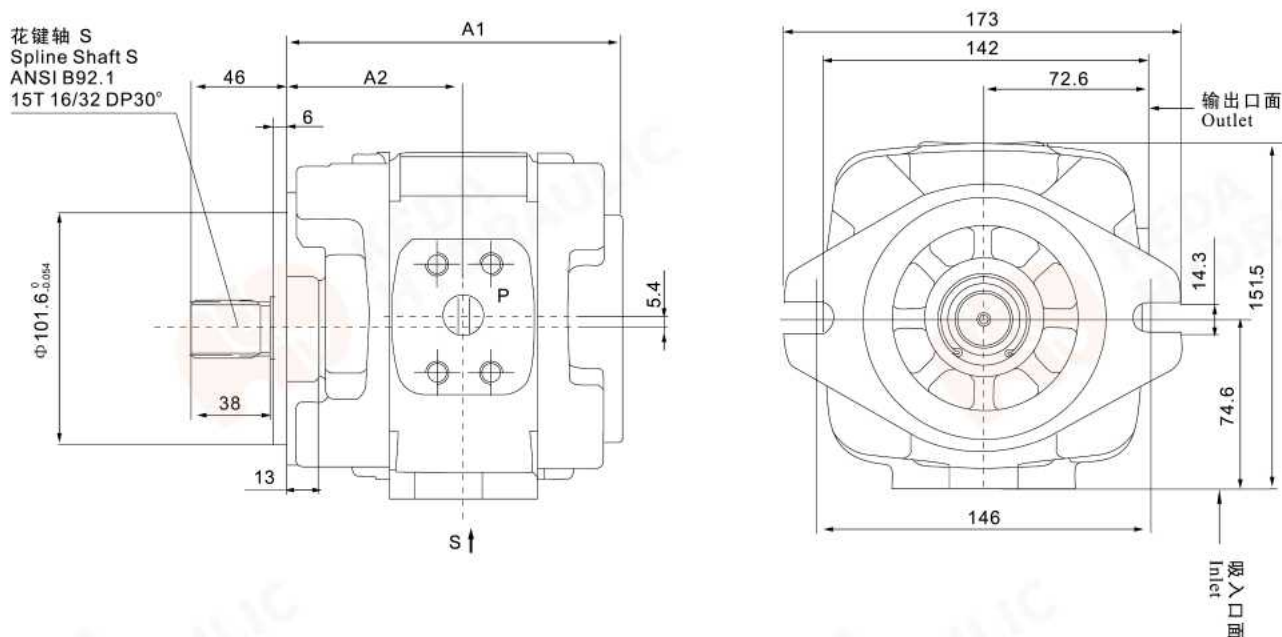
泵型号 Model No.	A1	A2	S	P
KD 1-25-01R-VPC	139	73	$\phi 32$	$\phi 18$
KD 1-32-01R-VPC	146	76.5		
KD 1-40-01R-VPC	153	80		
KD 1-50-01R-VPC	163	85	$\phi 32$	$\phi 20$
KD 1-63-01R-VPC	177	92		

油口法兰连接尺寸见第061页。

For flange installation dimension, refer to page 061.

安装连接尺寸 Installation demension

KD 1-※-01R-VSC (S型花键轴) S Type Spline shaft

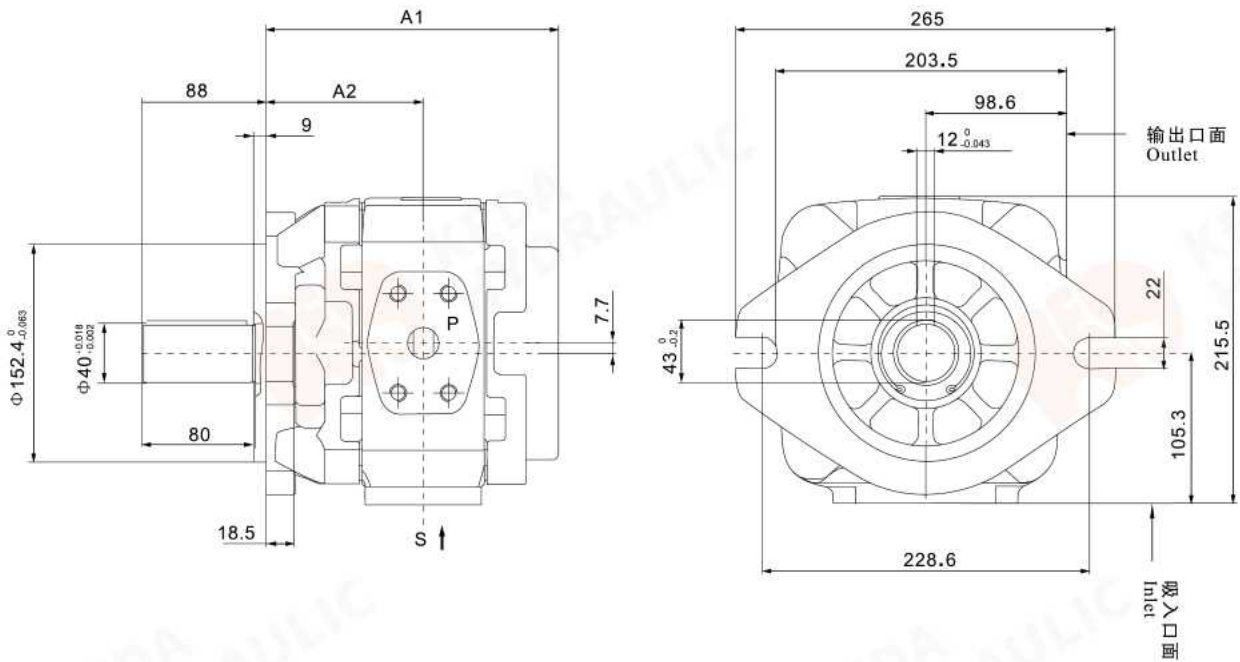


泵型号 Model No.	A1	A2	S	P
KD 1-25-01R-VSC	139	73		$\phi 18$
KD 1-32-01R-VSC	146	76.5		
KD 1-40-01R-VSC	153	80	$\phi 32$	$\phi 20$
KD 1-50-01R-VSC	163	85		
KD 1-63-01R-VSC	177	92		

油口法兰连接尺寸见第061页。
For flange installation demension, refer to page 061.

安装连接尺寸 Installation demension

KD 2-※-01R-VPC (P型平键轴) P Type Straight shaft



泵型号 Model No.	A1	A2	S	P
KD 2-63-01R-VPC	195	105.5	$\phi 40$	$\phi 23$
KD 2-80-01R-VPC	204	109.5	$\phi 51$	$\phi 32$
KD 2-100-01R-VPC	213	114		
KD 2-125-01R-VPC	225	120	$\phi 63.5$	$\phi 38$
KD 2-145-01R-VPC	235.5	124.75		
KD 2-160-01R-VPC	243	129	$\phi 76$	

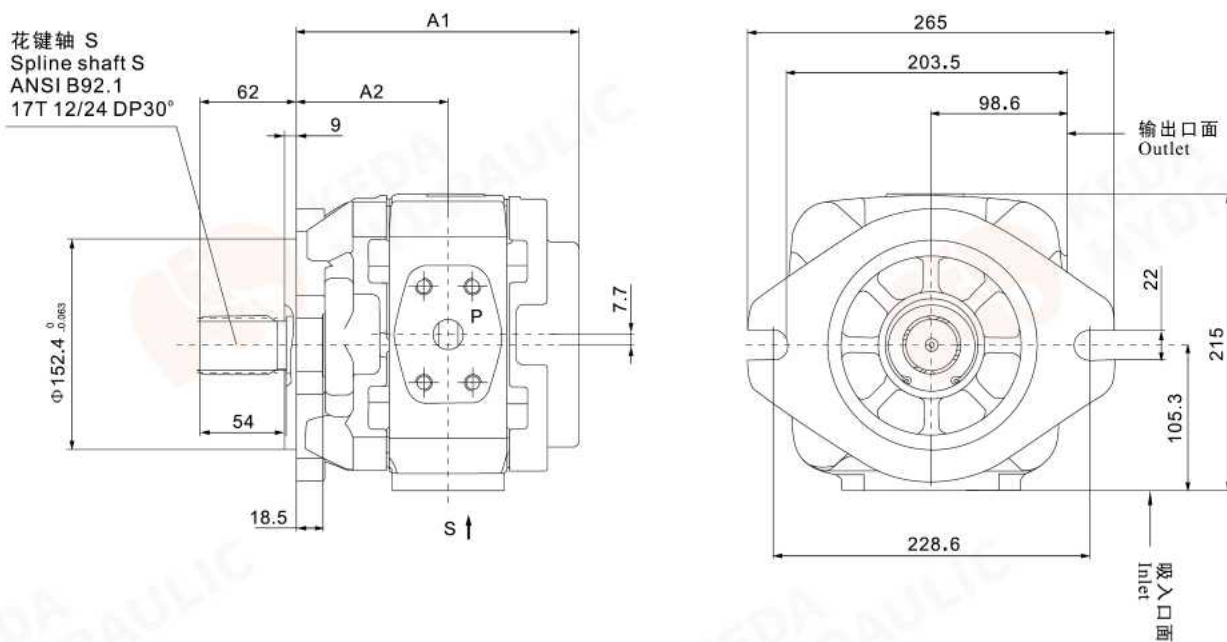
油口法兰连接尺寸见第061页。

For flange installation demension, refer to page 061.

安装连接尺寸 Installation demension

KD 2-※-01R-VSC (S型花键轴)

S Type spline shaft



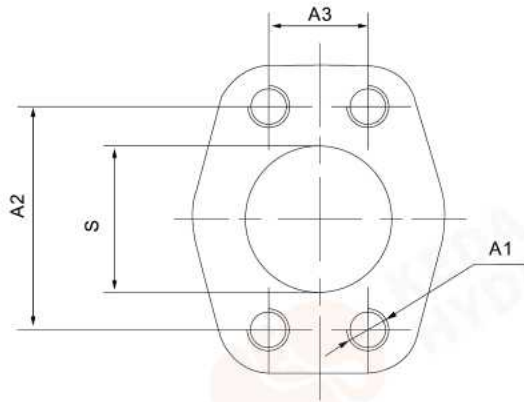
泵型号 Model No.	A1	A2	S	P
KD 2-63-01R-VSC	195	105.5	φ40	φ23
KD 2-80-01R-VSC	204	109.5	φ51	φ32
KD 2-100-01R-VSC	213	114		
KD 2-125-01R-VSC	225	120	φ63.5	φ38
KD 2-145-01R-VSC	235.5	124.75		
KD 2-160-01R-VSC	243	129	φ76	

油口法兰连接尺寸见第061页。

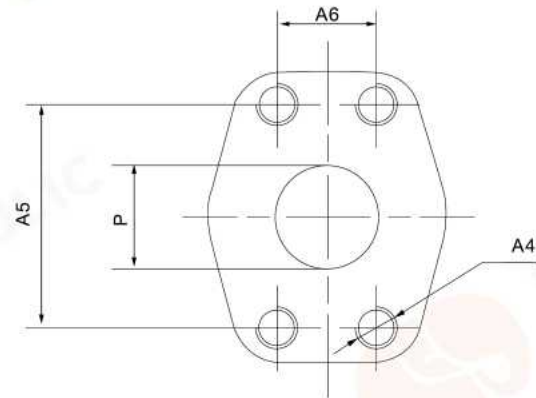
For flange installation demension, refer to page 061.

油口法兰连接尺寸 Inlet/Outlet flange

吸入口 “S”
Inlet “S”



输出口 “P”
Outlet “P”



系列 Model No.	规格 Spec	S	A1	A2	A3	P	A4	A5	A6
KD 0	10	φ 19	M10深15 M10 deep 15	52.4	26.2	φ 13	M8深13 M8 deep 13	38.1	17.5
	13								
	16								
KD 1	20	φ 26	M10深17 M10 deep 17	58.7	30.2	φ 18	M10深15 M10 deep 15	47.6	22.2
	25	φ 32		58.7	30.2	φ 18	M10深17 M10 deep 17	47.6	22.2
	32								
	40								
	50								
63	φ 20	52.4	26.2						
KD 2	63	φ 40	M12深20 M12 deep 20	69.9	35.7	φ 23	M10深17 M10 deep 17	52.4	26.2
	80	φ 51		77.8	42.9	φ 32	M12深20 M12 deep 20	69.9	35.7
	100	φ 63.5		88.9	50.8	φ 38	M16深25 M16 deep 25	79.4	36.5
	125								
	145	φ 76		106.4	61.9				
	160								

产品外观及简介 Surface/Brief introduction

双联泵是由两个单泵串联组装而成，具有一个共用进油口和两个可以输向两个独立回路的出油口。按照两个泵的系列组合，可获得多种排量。

Double pump is connected by two single pump, it is with the same inlet and two outlet to two independent loop. With two pump connection, it get more different displacement.

- | | |
|--------------|--------------|
| KD 10系列 | KD 11系列 |
| KD 10 Series | KD 11 Series |
| KD 21系列 | KD 22系列 |
| KD 21 Series | KD 22 Series |



型号说明 Model Designation

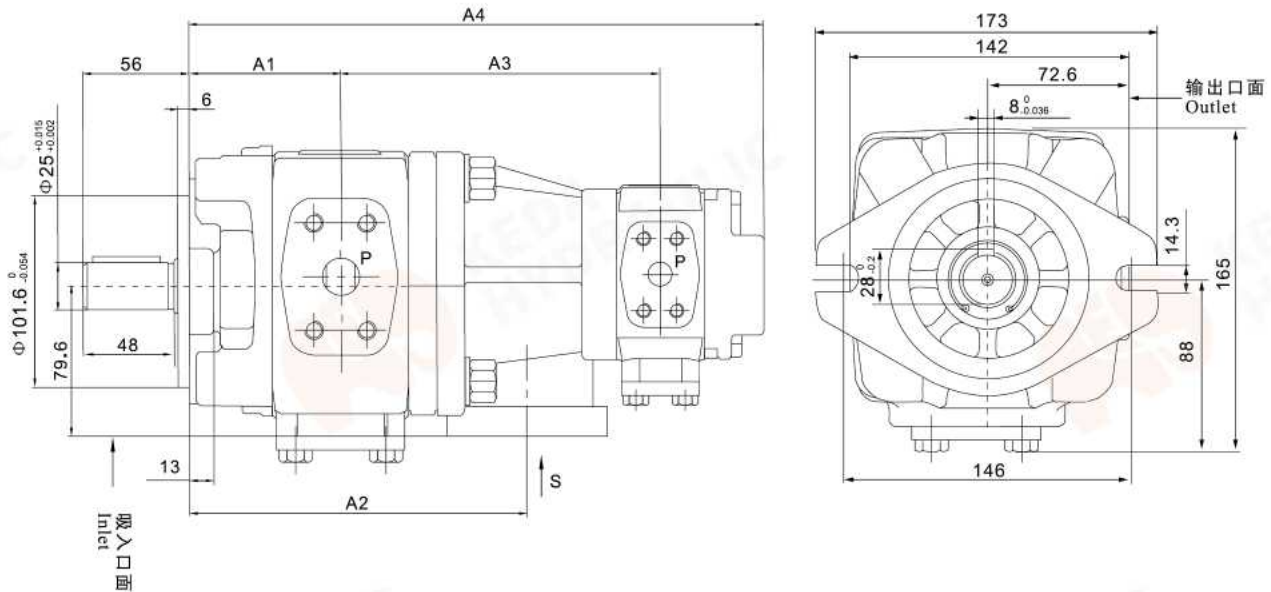
KD	2	1	-100	-63	-01	R	-V	P	C
----	---	---	------	-----	-----	---	----	---	---

<p>泵类型 Pump Type</p> <table border="1" style="width: 100%; border-collapse: collapse;"> <tr> <td>内啮合齿轮泵 Internal gear pump</td> <td style="text-align: center;">KD</td> </tr> </table> <p>前泵系列号 Front Pump Series No.</p> <table border="1" style="width: 100%; border-collapse: collapse;"> <tr> <td>排量 25...63</td> <td style="text-align: center;">1</td> </tr> <tr> <td>排量 63...160</td> <td style="text-align: center;">2</td> </tr> </table> <p>后泵系列号 Rear Pump Series No.</p> <table border="1" style="width: 100%; border-collapse: collapse;"> <tr> <td>排量 10...20</td> <td style="text-align: center;">0</td> </tr> <tr> <td>排量 25...63</td> <td style="text-align: center;">1</td> </tr> <tr> <td>排量 63...160</td> <td style="text-align: center;">2</td> </tr> </table> <p>前泵规格 Front Pump Spec</p> <table border="1" style="width: 100%; border-collapse: collapse;"> <tr> <td colspan="7">排量 (mL/r)</td> </tr> <tr> <td>25</td> <td>32</td> <td>40</td> <td>50</td> <td>63</td> <td>80</td> </tr> <tr> <td>100</td> <td>125</td> <td>145</td> <td>160</td> <td></td> <td></td> </tr> </table> <p>后泵规格 Rear Pump Spec</p> <table border="1" style="width: 100%; border-collapse: collapse;"> <tr> <td colspan="8">排量 (mL/r)</td> </tr> <tr> <td>10</td> <td>13</td> <td>16</td> <td>20</td> <td>25</td> <td>32</td> <td>40</td> </tr> <tr> <td>50</td> <td>63</td> <td>80</td> <td>100</td> <td>125</td> <td>145</td> <td>160</td> </tr> </table>	内啮合齿轮泵 Internal gear pump	KD	排量 25...63	1	排量 63...160	2	排量 10...20	0	排量 25...63	1	排量 63...160	2	排量 (mL/r)							25	32	40	50	63	80	100	125	145	160			排量 (mL/r)								10	13	16	20	25	32	40	50	63	80	100	125	145	160	<p>法兰安装形式 Flange Installation</p> <table border="1" style="width: 100%; border-collapse: collapse;"> <tr> <td>SAE 2孔 SAE 2Hole</td> <td style="text-align: center;">C</td> </tr> </table> <p>轴伸形式 Shaft type</p> <table border="1" style="width: 100%; border-collapse: collapse;"> <tr> <td>平键轴 Straight key shaft</td> <td style="text-align: center;">P</td> </tr> <tr> <td>花键轴 Splined shaft</td> <td style="text-align: center;">S</td> </tr> </table> <p>密封形式 Sealing</p> <table border="1" style="width: 100%; border-collapse: collapse;"> <tr> <td>氟橡胶 Viton</td> <td style="text-align: center;">V</td> </tr> </table> <p>旋转方向 (从轴端看) Direction of rotation (from shaft end of pump)</p> <table border="1" style="width: 100%; border-collapse: collapse;"> <tr> <td>顺时针 Clockwise rotation</td> <td style="text-align: center;">R</td> </tr> </table> <p>设计号 Designing No.</p> <table border="1" style="width: 100%; border-collapse: collapse;"> <tr> <td style="width: 80%;"></td> <td style="text-align: center;">01</td> </tr> </table>	SAE 2孔 SAE 2Hole	C	平键轴 Straight key shaft	P	花键轴 Splined shaft	S	氟橡胶 Viton	V	顺时针 Clockwise rotation	R		01
内啮合齿轮泵 Internal gear pump	KD																																																																	
排量 25...63	1																																																																	
排量 63...160	2																																																																	
排量 10...20	0																																																																	
排量 25...63	1																																																																	
排量 63...160	2																																																																	
排量 (mL/r)																																																																		
25	32	40	50	63	80																																																													
100	125	145	160																																																															
排量 (mL/r)																																																																		
10	13	16	20	25	32	40																																																												
50	63	80	100	125	145	160																																																												
SAE 2孔 SAE 2Hole	C																																																																	
平键轴 Straight key shaft	P																																																																	
花键轴 Splined shaft	S																																																																	
氟橡胶 Viton	V																																																																	
顺时针 Clockwise rotation	R																																																																	
	01																																																																	

安装连接尺寸 Installation dimension

KD 10-※-※-01R-VPC (P型平键轴)

P Type Straight Key shaft



泵型号 Model No.	A1	A2	后泵规格 Rear Pump Spec											
			08		10		13		16		20		25	
			A3	A4	A3	A4	A3	A4	A3	A4	A3	A4	A3	A4
KD10-25-※-01R-VPC	73	153.5	73	264.5	140.5	268.5	143.8	275	146.5	280.5	150.5	288.5	154.5	296.5
KD10-32-※-01R-VPC	76.5	160.5	76.5	271.5	144	275.5	147.3	282	150	287.5	154	295.5	158	303.5
KD10-40-※-01R-VPC	80	167.5	80	278.5	147.5	282.5	150.8	289	153.5	294.5	157.5	302.5	161.5	310.5
KD10-50-※-01R-VPC	85	177.5	85	288.5	152.5	292.5	155.8	299	158.5	304.5	162.5	312.5	166.5	320.5
KD10-63-※-01R-VPC	92	191.5	92	302.5	159.5	306.5	162.8	313	165.5	318.5	169.5	326.5	173.5	334.5

吸油口法兰见第071页。

For inlet flange, refer to page 071.

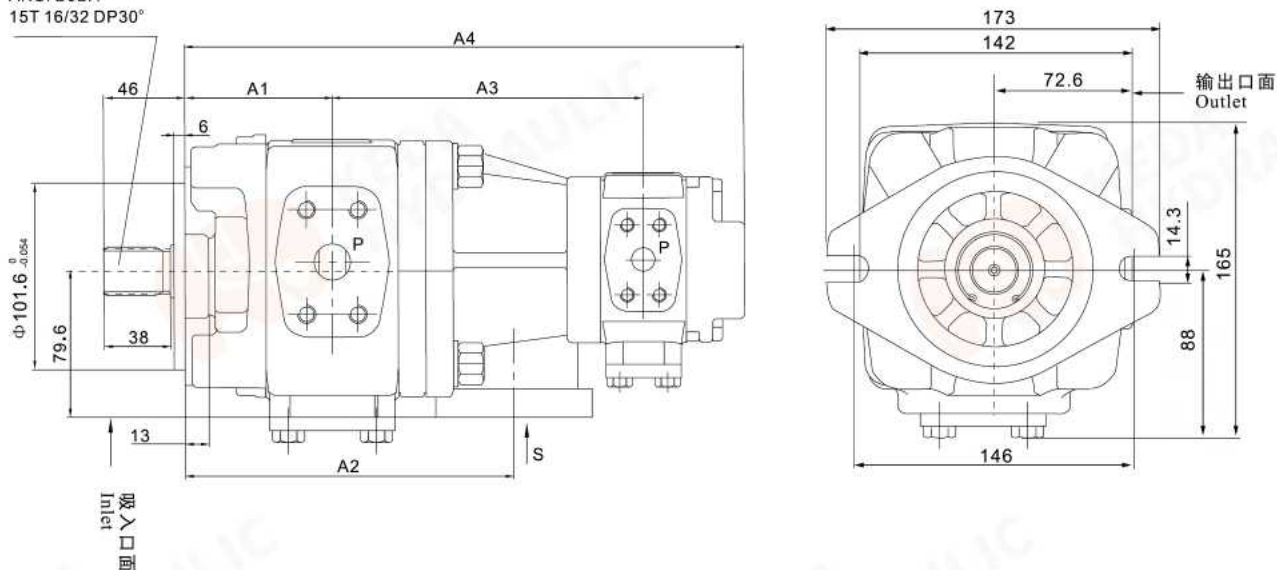
出油口法兰见第061页。

For outlet flange, refer to page 061.

安装连接尺寸 Installation dimension

KD 10-※-※-01R-VSC (S型花键轴) S Type Spline shaft

花键轴 S
Spline shaft S
ANSI B92.1
15T 16/32 DP30°



泵型号 Model No.	A1	A2	后泵规格 Rear Pump Spec											
			08		10		13		16		20		25	
			A3	A4	A3	A4	A3	A4	A3	A4	A3	A4	A3	A4
KD10-25-※-01R-VSC	73	153.5	73	264.5	140.5	268.5	143.8	275	146.5	280.5	150.5	288.5	154.5	296.5
KD10-32-※-01R-VSC	76.5	160.5	76.5	271.5	144	275.5	147.3	282	150	287.5	154	295.5	158	303.5
KD10-40-※-01R-VSC	80	167.5	80	278.5	147.5	282.5	150.8	289	153.5	294.5	157.5	302.5	161.5	310.5
KD10-50-※-01R-VSC	85	177.5	85	288.5	152.5	292.5	155.8	299	158.5	304.5	162.5	312.5	166.5	320.5
KD10-63-※-01R-VSC	92	191.5	92	302.5	159.5	306.5	162.8	313	165.5	318.5	169.5	326.5	173.5	334.5

吸油口法兰见第071页。

For inlet flange, refer to page071.

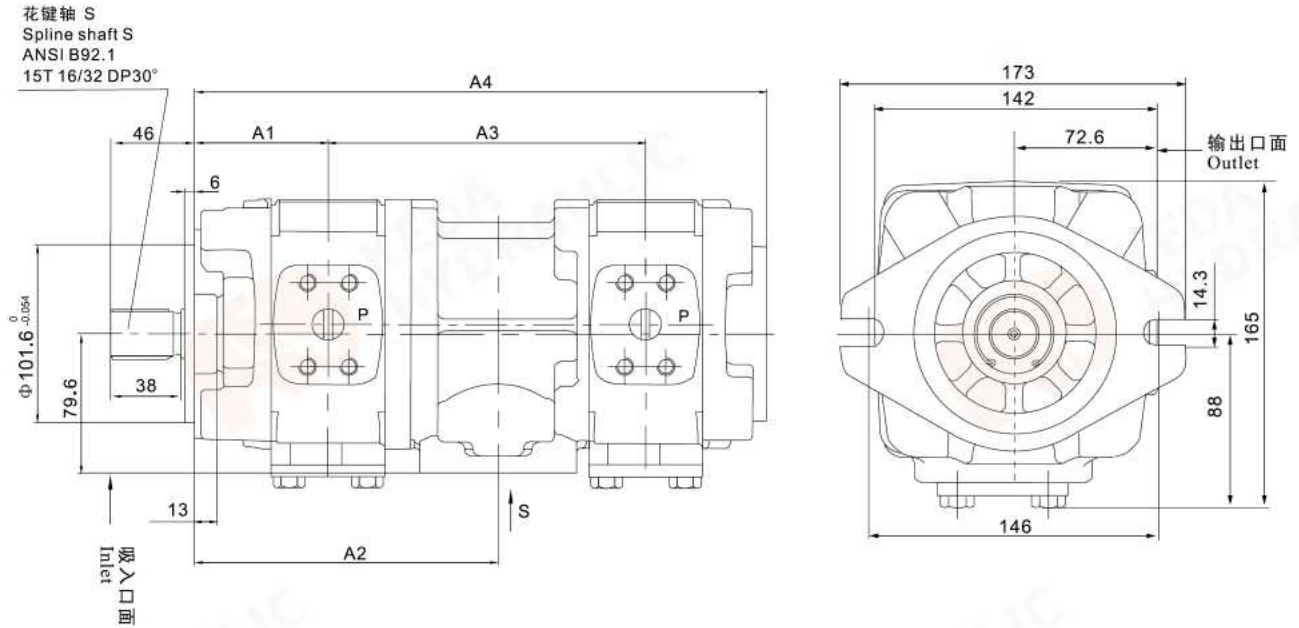
出油口法兰见第061页。

For outlet flange, refer to page 061.

安装连接尺寸 Installation demension

KD 11-※-※-01R-VSC (S型花键轴)

S Type Spline shaft



泵型号 Model No.	A1	A2	后泵规格 Rear Pump Spec										
			25		32		40		50		63		
			A3	A4	A3	A4	A3	A4	A3	A4	A3	A4	
KD 11-25-※-01R-VSC	73	161	161	300									
KD 11-32-※-01R-VSC	76.5	168	164.5	307	168	314							
KD 11-40-※-01R-VSC	80	175	168	314	171.5	321	175	328					
KD 11-50-※-01R-VSC	85	185	173	324	176.5	331	180	338	185	348			
KD 11-63-※-01R-VSC	92	199	180	338	183.5	345	187	352	192	362	199	376	

吸油口法兰见第071页。

For inlet flange, refer to page071.

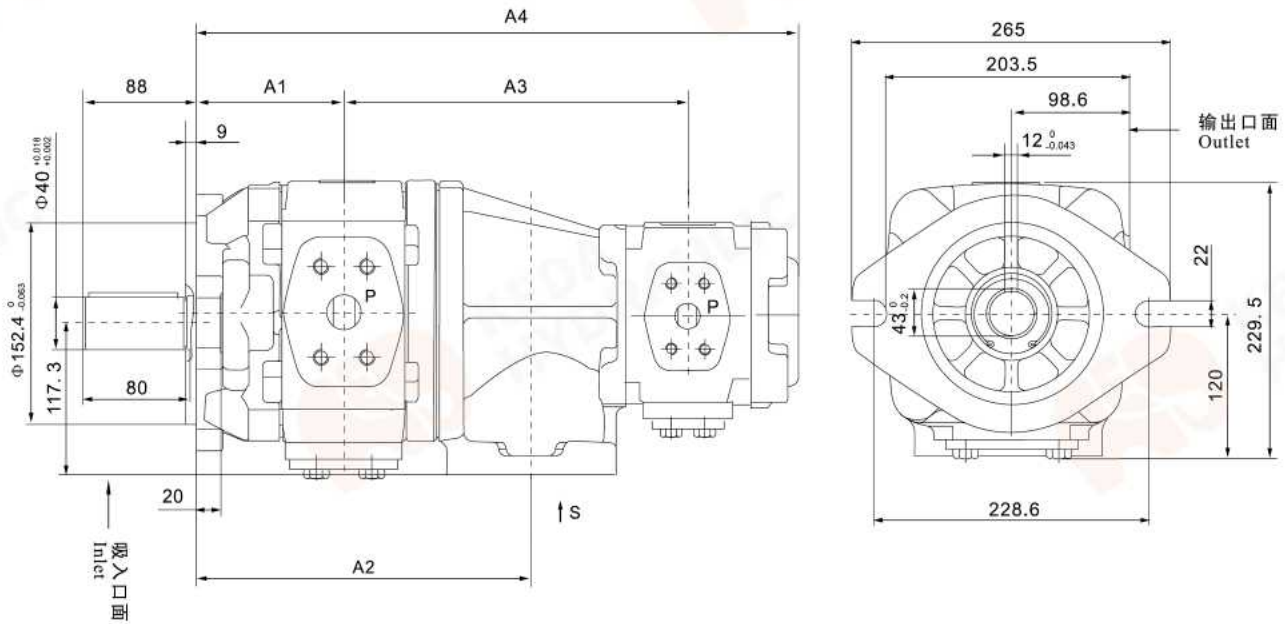
出油口法兰见第061页。

For outlet flange, refer to page 061.

安装连接尺寸 Installation dimension

KD 21-※-※-01R-VPC (P型平键轴)

P Type Straight Key shaft



泵型号 Model No.	A1	A2	后泵规格 Rear Pump Spec									
			25		32		40		50		63	
			A3	A4	A3	A4	A3	A4	A3	A4	A3	A4
KD21-63-※-01R-VPC	105.5	223	200.5	372	204	379	207.5	386	212.5	396	219.5	410
KD21-80-※-01R-VPC	109.5	231	204.5	380	208	387	211.5	394	216.5	404	223.5	418
KD21-100-※-01R-VPC	114	240	209	389	212.5	396	216	403	221	413	228	427
KD21-125-※-01R-VPC	120	252	215	401	218.5	408	222	415	227	425	234	439
KD21-145-※-01R-VPC	124.8	261.5	219.8	410.5	223.3	417.5	226.8	424.5	231.8	434.5	238.8	448.5
KD21-160-※-01R-VPC	129	270	224	419	227.5	426	231	433	236	443	243	457

吸油口法兰见第071页。

For inlet flange, refer to page 071.

出油口法兰见第061页。

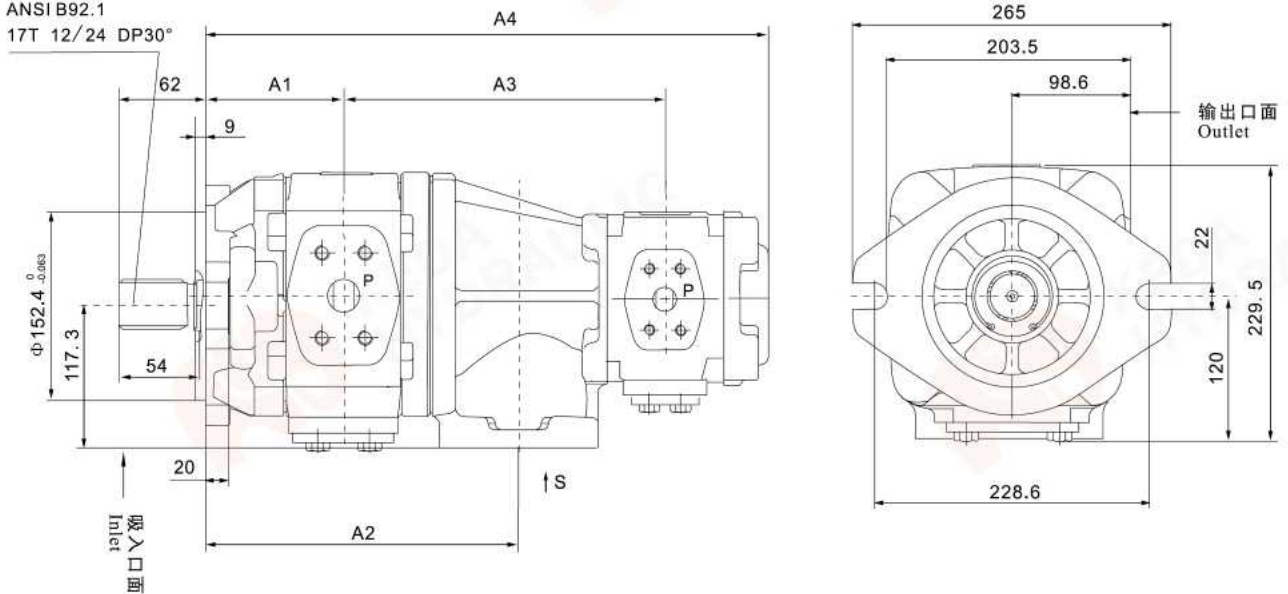
For outlet flange, refer to page 061.

安装连接尺寸 Installation demension

KD 21-※-※-01R-VSC (S型花键轴)

S Type Spline shaft

花键轴 S
Spline shaft S
ANSI B92.1
17T 12/24 DP30°



泵型号 Model No.	A1	A2	后泵规格 Rear Pump Spec									
			25		32		40		50		63	
			A3	A4	A3	A4	A3	A4	A3	A4	A3	A4
KD 21-63-※-01R-VSC	105.5	223	200.5	372	204	379	207.5	386	212.5	396	219.5	410
KD 21-80-※-01R-VSC	109.5	231	204.5	380	208	387	211.5	394	216.5	404	223.5	418
KD 21-100-※-01R-VSC	114	240	209	389	212.5	396	216	403	221	413	228	427
KD 21-125-※-01R-VSC	120	252	215	401	218.5	408	222	415	227	425	234	439
KD 21-145-※-01R-VSC	124.8	261.5	219.8	410.5	223.3	417.5	226.8	424.5	231.8	434.5	238.8	448.5
KD 21-160-※-01R-VSC	129	270	224	419	227.5	426	231	433	236	443	243	457

吸油口法兰见第071页。

For inlet flange, refer to page 071.

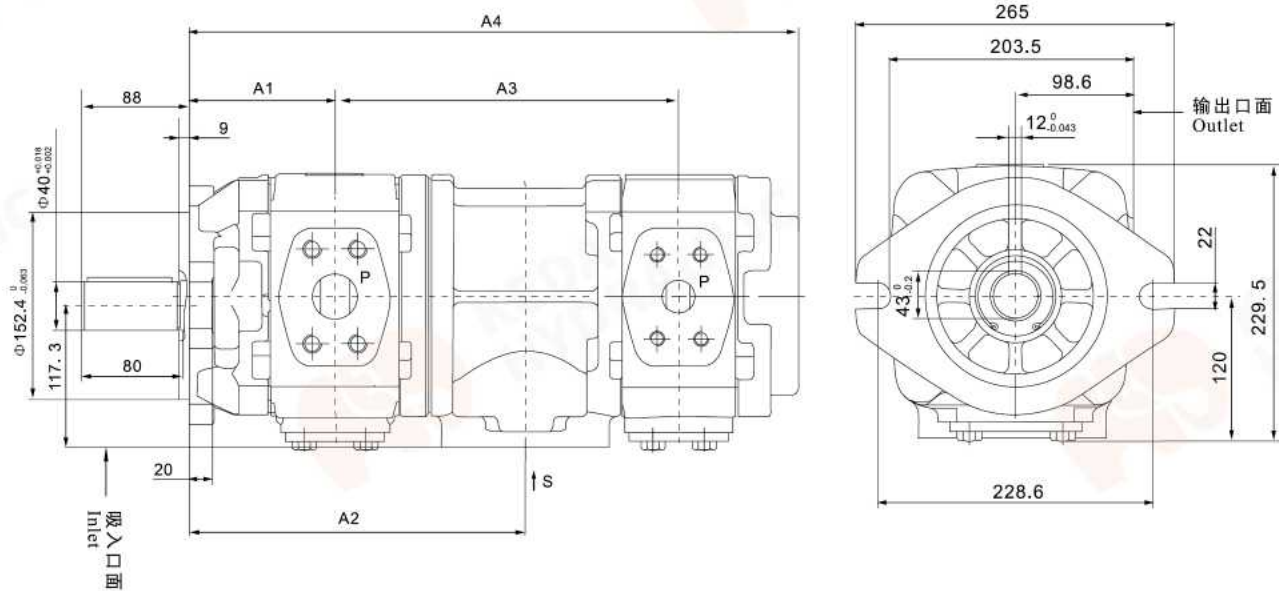
出油口法兰见第061页。

For outlet flange, refer to page 061.

安装连接尺寸 Installation dimension

KD 22-※-※-01R-VPC (P型平键轴)

P Type Straight Key shaft



泵型号 Model No.	A1	A2	后泵规格 Rear Pump Spec											
			63		80		100		125		145		160	
			A3	A4	A3	A4	A3	A4	A3	A4	A3	A4	A3	A4
KD 22-63-※-01R-VPC	105.5	230.5	225	421										
KD 22-80-※-01R-VPC	109.5	238.5	229	429	233	437								
KD 22-100-※-01R-VPC	114	247.5	223.5	438	237.5	446	242	455						
KD 22-125-※-01R-VPC	120	259.5	239.5	450	243.5	458	248	467	454	479				
KD 22-145-※-01R-VPC	124.5	269	244.3	459.5	248.3	467.5	252.8	476.5	258.8	488.5	463.5	498		
KD 22-160-※-01R-VPC	129	277.5	248.5	468	251.5	476	257	485	263	497	268.3	506.5	272	515

吸油口法兰见第071页。

For inlet flange, refer to page 071.

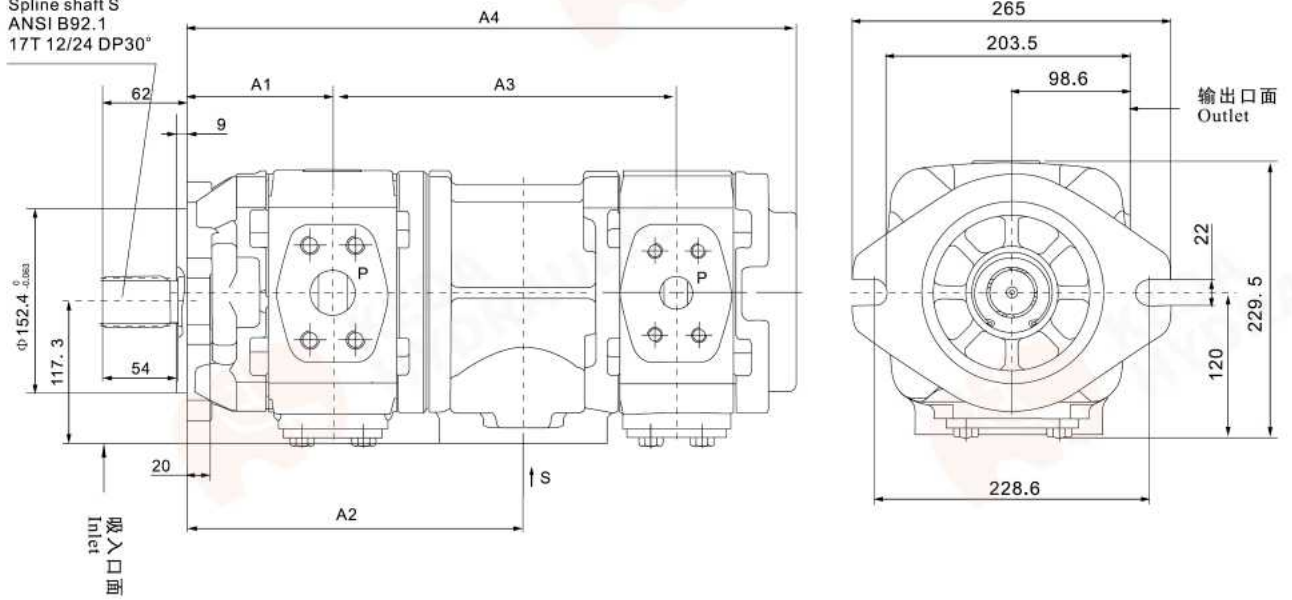
出油口法兰见第061页。

For outlet flange, refer to page 061.

安装连接尺寸 Installation dimension

**KD 22-※-※-01R-VSC (S型花键轴)
S Type Spline shaft**

花键轴 S
Spline shaft S
ANSI B92.1
17T 12/24 DP30°



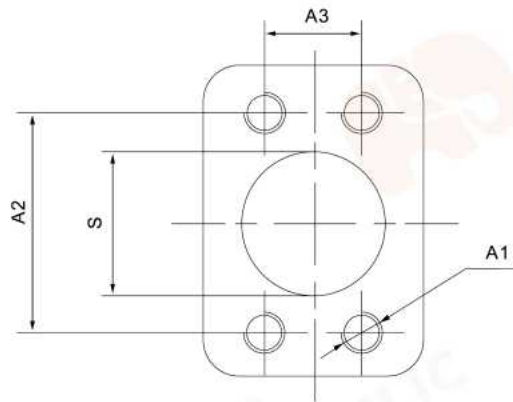
泵型号 Model No.	A1	A2	后泵规格 Rear Pump Spec											
			63		80		100		125		145		160	
			A3	A4	A3	A4	A3	A4	A3	A4	A3	A4	A3	A4
KD 22-63-※-01R-VSC	105.5	230.5	225	421										
KD 22-80-※-01R-VSC	109.5	238.5	229	429	233	437								
KD 22-100-※-01R-VSC	114	247.5	223.5	438	237.5	446	242	455						
KD 22-125-※-01R-VSC	120	259.5	239.5	450	243.5	458	248	467	454	479				
KD 22-145-※-01R-VSC	124.5	269	244.3	459.5	248.3	467.5	252.8	476.5	258.8	488.5	463.5	498		
KD 22-160-※-01R-VSC	129	277.5	248.5	468	251.5	476	257	485	263	497	268.3	506.5	272	515

吸油口法兰见第071页。

For inlet flange, refer to page071.

出油口法兰见第061页。

For outlet flange, refer to page 061.

**双联泵吸入口 “S”
Double pump Inlet “S”**


系列 Series	S	A1	A2	A3
KD10	φ 38	M12深20 M12 Deep 20	69.9	35.7
KD11	φ 51		77.8	42.9
KD21	φ 76	M16深25 M16 Deep 25	106.4	61.9
KD22	φ 89		120.7	69.9

使用注意事项 Application
1、工作介质 Operating Oil

可使用粘度范围在10-300mm²/s的石油基矿物油，推荐使用ISO VG46抗磨液压油。
Viscosity range:10-300mm²/s , ISO VG46 Anti-wear hydraulic oil is recommended for better performance.

2、工作温度 Operating Temperature

工作温度范围 -10°C-100°C，为保证长期的可靠寿命，最佳工作温度范围20°C-80°C。
Operating temperature range:-10°C-100°C. To ensure the reliable lifetime,the best operating temperature range is20°C-80°C

3、清洁度控制 cleanliness control

要求控制系统油液的清洁度水平，不超过9级（NAS 1638）或17/14（ISO 4066）
Control cleanliness of system oil,can not over 9 lever(NAS 1638)or 17/14（ISO 4066）

4、泵安装 Installation

轴与电机连接尽可能使用挠性联轴器，以避免产生弯曲力矩或轴向推力，轴与电机轴最大允许同轴度误差小于0.15mm。
Shaft and motor should be connected by flexible coupling to avoid harmful effects.Concentricity of shafts between pump and motor is important to pump life and should be within 0.15mm

5、吸入口压力与配管 Pressure of Inlet and Pipline

允许吸入口绝对压力为0.2-2 Bar。合理的配管通径应不小于泵的吸油口，以确保平均0.6-1.2m/s的最佳吸油速度。
Absolute pressure of inlet is 0.2-2Bar.Diameter of absorb pipline can't be smaller than inlet to ensure the best average oil speed 0.6-1.2m/s.

6、进出口连接 Inlet/outlet connection

尽力避免进出油管采用钢管硬连接，建议使用橡胶软管，避免出现额外的负载导致额外的噪音。
Rubber hose is recommended to avoid extra load causing extra noise.Don't connect with steel pipe.

7、维护 Maintenance

为提高泵的使用寿命，应定期检查系统的异常振动、噪音、油液温度、油箱内是泵有气泡生成以及有无泄漏等问题，并及时维护。
In order to mke the life of pump longer,customer should check the system in time,such as if abnormal shocking,noise,oil temperature,bubble in tank, leakage.....and maintenance in time.